

atran\velo™

cycleLAB



02	Content and values
03	History
04	AVS
05	AVS+
06	TRIPLE-X
08	Bags
12	Baskets
14	Kickstands
16	Carriers
17	Carriers AVS+
18	Others
20	Details, reviews and social media

Table of
CONTENT

Values

We work closely with our customers to build strong relationships based on trust and loyalty.

Instead of following fast fashion trends and compromising quality for profit, we focus on timeless design, function, innovation, and durability.

Embracing reliability as a core value is easy. Living it requires constant work. To us, reliability means dependability, loyalty, trustworthiness, and authenticity, which we always strive to achieve.

We always want to be the leading company in our industry. Thus, we hold ourselves accountable and always act in the best interests of our customers, our team, our environment, and our community.

Since 1937....



AtranVelo has designed and manufactured components for the bicycle industry since 1937. With over 80 years in the business, we have gained lots of valuable experience, know-how, and insight that we bring to work every day.

Our driving force has, and always will be, to help people use their bikes more. Whether for their daily commute, weekend trips with the family, hikes with friends, or bikepacking adventures with one's partner, we want to make biking the number one choice. Being based in Falkenberg, a small coastal town in the south of Sweden, we have to make products that can endure harsh weather conditions.

We believe in making products that last, so instead of following fast fashion trends and compromising quality for profit, we focus on timeless design, function, and durability.

The same mindset extends to how we do business, often opting to build strong relationships with customers and manufacturers over short-term gains.

For years, we have worked closely with several of Europe's leading bicycle manufacturers to develop new products. Thanks to our in-house design team and close relationship with manufacturers, we can offer great flexibility and customize products, order placements, and delivery times to customers' needs.



About

The AtranVeloSystem is a patented, minimalistic system for secure attachment of accessories to your bike. It includes a wide range of high-quality bags, baskets, and boxes for different occasions. All accessories are modular and compatible with both front and rear carriers. A latch allows you to intuitively switch carriers and accessories with ease.

Produce your own accessories

AVS is an open system, so that manufacturers can license it to produce their own carriers and bike accessories. AVS is used by well-known brands around the world, and if needed, carrier platforms can be tailored to customer requests. We produce our own high-quality range of baskets, panniers, bags, wooden crates, and other accessories, but AVS products are also available from a growing list of partners around the world.

Design award

In 2018, our intuitive AtranVeloSystem (AVS) for bike carriers and accessories received one of the world's most renowned design awards, the Red Dot Award. The international jury comprising of independent design experts noted an outstanding level of innovation, functionality, user-friendliness, and longevity in their assessment.



Customized design



Locking possibility



Heavier loads

AVS+ is a reinforced and improved version of the AVS system that seamlessly integrates with all existing AVS accessories. A range of child seats are already on the market, and heavy duty accessories will soon be available, supporting up to 35 kg. This provides flexibility for heavier loads, touring, commuting, or running errands. The robust AVS+ adaptor has a reinforced hook with aluminium for maximum strength and security to the system. Additionally, the lock with a key adds security so that the child seat can be left on a bike without the risk of theft. With AVS+, you can carry more, stress less, and enjoy the ride, knowing that everything is securely attached and ready for the journey ahead.



In cooperation with:

POLISPORT

MOVE

bobike

urban

iki

BY OOK

One topbag
Two sidebags/
baskets



Tilt outwards



AVS



TRIPLE-X

TRIPLE-X allows you to attach two side panniers/ baskets and a stylish accessory on top at the same time. It stays firm while riding and fully utilizes modular accessories, allowing you to attach, match, mix, and switch bike accessories more freely. The upgraded TRIPLE-X adaptor can be used on any AVS carrier and new carriers in the 3X series have been introduced, along with a universal side bar.





TRIPLE-X ADAPTOR

The TRIPLE-X Adaptor easily attaches and detaches from any AVS carrier. The adaptor also includes a lock to keep it securely in place, ensuring added security against theft. The total maximum load capacity for the TRIPLE-X is 25 kg. With an individual maximum of 15 kg on the top surface and 10 kg per side.



TRIPLE-X carriers

The 3X Carriers are some of the most versatile carriers on the market, thanks to their AVS and TRIPLE-X integration. These sporty and multifunctional carriers are adjustable from 26" to 29". They feature a new smart fixation system for legs (QAL), making them very easy to install and use. An add-on spring clamp is available as an option. Max load: 25 kg.



TRIPLE-X UNI

The TRIPLE-X UNI sidebar is intended to be attached directly to your bike carrier. Constructed from aluminum for enhanced durability, this sidebar is suitable for most bike carriers with leg diameters ranging from 8-14 mm. It adds side functionality to standard carriers and can easily be secured with two screws. Depending on your specific needs, you have the option to choose either one or two sidebars. Max load is 10 kg/ side.

BAGS



METRO DUFFLE

#1809-40-40

This is a spacious bag perfect for carrying a lot of items with ease. With a detachable shoulder strap and water-resistant coating, it's the perfect companion for all your on-the-go needs. The zipper is covered with a rubber membrane to keep your belongings safe and dry. It features two outside pockets and several inside compartments to help you easily organize all your everyday items. Weight: 1.24 kg, Volume: 41 L.



METRO TOTE

#1809-32-40

This black canvas everyday bag combines style and practicality. You can organize your belongings with great storage, internal mesh, and zippered pockets. The bag has a hard shell bottom and a rubber membrane-covered zipper for water-resistance. It also features an exterior pocket for easy access to your phone, keys, or wallet. Weight: 0.92 kg, Volume: 29 L.



METRO TOP

#1809-31-40

This black canvas bag is perfect for everyday use when you need the most essential. It has a main compartment and smaller pockets to organize your items. The water-repellent coating make it an ideal on-the-go companion. The rubber membrane-covered zipper keeps your gear safe and dry. METRO TOP is large enough to store most standard bicycle helmets. Weight: 1.06 kg, Volume: 13 L.



METRO SIDE

#1809-20-40

This versatile and durable single pannier is made of robust and water-resistant canvas and can quickly and easily be detached and used as a shoulder bag thanks to TRIPLE-X and an extra strap. The rubber membrane-covered zipper keeps your belongings safe and dry. It also includes an external pocket for small items and various compartments to keep your gear organized, including a laptop pocket. Weight: 0.90 kg, Volume: 20 L.



METRO SIDE SET

#1809-10-40

The Metro side bag as a TRIPLE-X Set, doubling your storage capacity with two single versatile panniers. A total of 40 liters of storage. The AtranVelo's TRIPLE-X System makes it possible to add a top bag or basket. Weight: 2.15 kg Volume: 40 L.



COMMUTER SIDE - GREEN

#1814-20-70

This is a water-resistant pannier series that is both stylish and functional. It features a large main compartment, extra pockets, and a laptop sleeve. The bag also has reflective elements for visibility and a magnetic buckle. A velcro strap is included for additional security. Can quickly and easily be detached and used as a shoulder bag thanks to TRIPLE-X and an extra strap. Weight: 0,75 kg
Volume: 23 L.

COMMUTER SIDE - RUST

#1814-20-02

This is a water-resistant pannier series that is both stylish and functional. It features a large main compartment, extra pockets, and a laptop sleeve. The bag also has reflective elements for visibility and a magnetic buckle. A velcro strap is included for additional security. Can quickly and easily be detached and used as a shoulder bag thanks to TRIPLE-X and an extra strap. Weight: 0,75 kg
Volume: 23 L.

TRIPLE-X



Available
as set



COMMUTER SIDE - BLACK

#1814-20-40

This is a water-resistant pannier series that is both stylish and functional. It features a large main compartment, extra pockets, and a laptop sleeve. The bag also has reflective elements for visibility and a magnetic buckle. A velcro strap is included for additional security. Can quickly and easily be detached and used as a shoulder bag thanks to TRIPLE-X and an extra strap. Weight: 0.75 kg
Volume: 23 L.

Available
as set



COMMUTER SIDE WP

#1815-20-40

This is a versatile waterproof bag, designed for everyday use in any weather. Featuring a spacious main compartment, extra pockets, and a dedicated laptop sleeve, it keeps your belongings organized and protected. Reflective elements enhance visibility, while a magnetic buckle and velcro strap offer security on the go. Crafted for durability and style, it's your perfect companion for all adventures. It also includes a laptop bag. Weight: 0.95 kg
Volume: 24 L.



COMMUTER TOP

#1814-30-40

This is an extremely spacious top bag. It's water-resistant and designed to accommodate a helmet and various cycling essentials. This versatile bag is perfect for commuting and road trips. It offers small pockets for personal items, two bottle holders, and a larger main compartment. It also includes a convenient handle for easy carrying and can be worn as a shoulder bag with the additional shoulder strap. Weight: 1.20 kg
Volume: 16 L.

Available
in red



TRAVEL SIDE SET

#1804-30-40

This is a waterproof double side pannier with generous storage space. In addition to being equipped with AVS, it also features AtranVelo's TRIPLE-X system which makes it possible to use alongside our Top Bags and Baskets. Whether you are running errands, bikepacking, or going on an adventure, TRAVEL has room for it all. You can combine it with TRAVEL Top if desired. Weight: 1.65 kg
Volume: 50 L.

BASKETS & CRATES



DAILY SIDE

#1754-20-41

This TRIPLE-X steel side basket is a solid and sturdy everyday basket with a powder-coated steel mesh and a soft grip for added comfort. Designed to make your everyday tasks easier, this basket offers plenty of room for your belongings while ensuring durability with its robust construction. Weight: 1.78 kg Volume: 25L.

Universal
size



DAILY 20

#1754-41-20

DAILY 20 is a spacious and classic steel basket equipped with our AVS system and a comfortable carrying handle. This basket offers a robust and reliable construction, with a powder-coated steel mesh and a soft grip for added comfort. Perfect for everyday use with a sleek design that fits all your needs. It's great for mounting on the back of your bike. Weight: 1.47 kg Volume: 20 L.



EPIC SIDE

#1753-71K

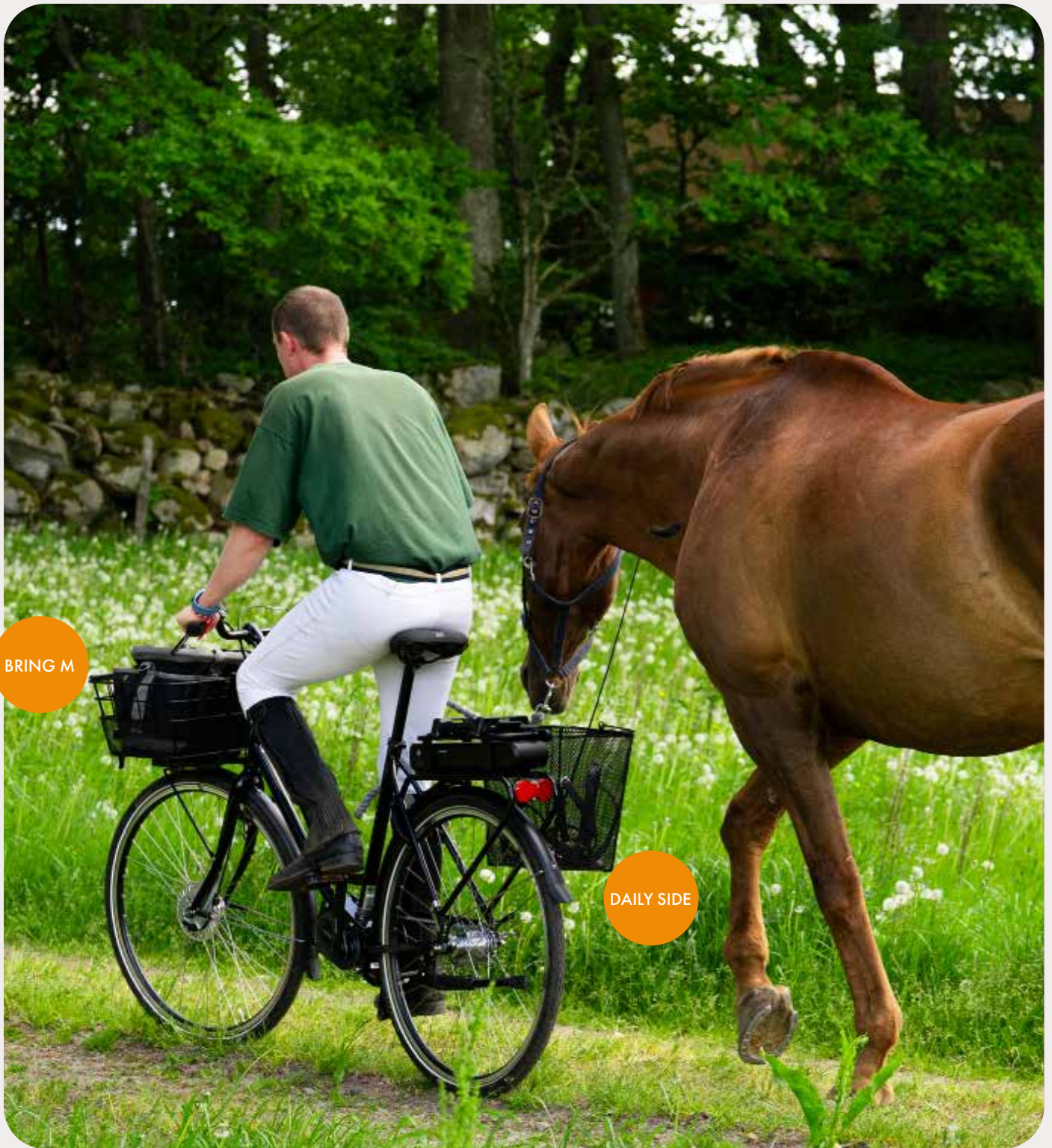
Premium TRIPLE-X basket with a comfortable carrying handle and a powder-coated finish, soft grip and recycled plastic bottom. Additionally, it comes with noise and scratch-reducing bumper and a velcro grip for added comfort. Say goodbye to the hassle of carrying loads across town – with this premium basket, you can confidently haul the essentials you need on your bike. Weight: 1.33kg Volume 25 L.



GROCERY M

#1768-71 M

A beautiful and stable basket with plastic bottom. Designed to make bike shopping effortless, this basket offers plenty of space for your belongings. With its shaped base, GROCERY M keeps your keys and small stuff safely placed. A soft handle for added comfort and with stylish design the GROCERY M is not only practical but also a chic accessory for your bike. Weight: 1.57kg Volume: 15 L.



CARRY SIDE

#1765-10-71

Functional crate with TRIPLE-X system. The sleek design ensures the safety and dryness of your belongings, especially when paired with one of our rain covers. This spacious pannier features comfortable handles for effortless carrying, which conveniently lock into place to prevent any rattling while cycling. Weight: 1.19 kg Volume: 22 L.

KICKSTANDS



PARKO UNI

#1203-71

This is the ultimate solution for bikes without built-in kickstand. It's a universal rear kickstand that is both stylish and functional, and it provides great stability for your bike. Its easy attachment to nearly any bike frame makes this kickstand very versatile. With its clean design it looks great on any bike. Weight: 0.46 kg.



PARKO COMPACT HV

#1208-S-7

Practical, strong, and durable kickstand available for bikes with either center mount or integrated 18mm or 40mm mounting holes on the chainstay. Quick and easy to install and a joy to use. The adjustable length works for bikes with wheels from 20-24 inches. Ideal for folding e-bikes, compact e-bikes etc. Weight: 0.25 kg.



STABILE

#1255-4

STABILE is an extremely sturdy double kickstand designed for cargo and E-cargo bikes. The locking feature prevents the stand from folding when the bike is loaded. Its strong construction allows for a huge load. When correctly mounted and specified, STABILE gives a maximum capacity of 150 kg. The kickstand comes in specified lengths for OEM use. Weight: 1.20 kg.



CARRIERS



URBAN PRO

#1516

URBAN PRO is a sleek and sporty rear carrier designed for the urban explorer. The front fixation is integrated under the fender which gives a clean look. The carrier is available with or without front leg. URBAN PRO is specified individually as OEM model. Weight: 0.65 kg Max load: 15 kg.



3X PRO

#1453-71-V5

This sporty and slim carrier is adjustable from 26" - 29". AVS and TRIPLE-X integration make it one of the most versatile carriers on the market. It features a new smart fixation system for legs, making it very easy to install and use (QAL). Add-on spring clamp is available as an option. Weight: 0.77 kg Max load: 25 kg.



3X 365

#1456-71-V5

A strong aluminum carrier with a width of 120 mm for everyday use. It's adjustable from 26" to 29" with a new smart fixation system for legs. Very sturdy with both AVS and TRIPLE-X, it's one of the most versatile carriers on the market. An add-on spring clamp is available as an option. Weight: 0.87 kg Max load: 25 kg.



CUSTOM CARRIER PROJECTS

AtranVelo offers customized carriers with AVS, AVS+ and TRIPLE-X integration. Contact us for more information.

CARRIERS AVS+



MAXI #1503

This robust AVS+ carrier comes equipped with an adjustable Quick Adaptable Leg (QAL). Stainless steel clamp is an option. Available with both AtranVelo standard extenders as well as customized fixation. Weight: 0.76 kg Max load: 30 kg.



ZONE #1563

A sporty AVS+ carrier with a clean design, constructed of 12 mm aluminum tube and a black-powder coat finish. It has forged parts and a stainless-steel clamp. Available with both AtranVelo standard extenders as well as customized fixation. Weight: 0.72 kg Max load: 27 kg.



DELTA BS #1558

This AVS+ carrier is available in two versions - one with a bag holder and the other one without. Its forged parts and stainless-steel clamp makes it solid and durable. Available with AtranVelo standard extenders as well as customized fixation. Weight: 0.81 kg Max load: 27 kg.



ALPHA #1463

A sleek and sophisticated carrier made of die-casted and forged parts, with adjustable legs designed to provide optimal strength and featuring a black-powder coat finish. Available with standard AtranVelo extenders or customized fixation. Weight: 0.98 kg Max load: 30 kg.

OTHERS



TRIPLE-X ADAPTOR

#1750-L-4104

TRIPLE-X makes the most of our interchangeable accessories, giving you more freedom to attach, match, mix, and switch bike accessories. You can easily add one or two side panniers and attach a top bag or a stylish basket. It is compatible with all AVS carriers. A lock secures the adaptor against theft. Maximum load capacity for the TRIPLE-X is 25 kg, max 15 kg on top surface and 10 kg load capacity per side. Weight: 0.35 kg.



TRIPLE-X UNI

#1302-71

Made of aluminum for durability, the TRIPLE X UNI sidebar fits most bike carriers with leg diameters of 8-14 mm. Adds side function to standard carriers and is easily fixed with a screw. Weight: 0.14 kg.

Available in
0,45 m and 0,6 m



FLAT BUNGY CORD

#1692

This elastic bungee cord is equipped with hooks for fastening and securely attaches to your basket, providing a flexible and reliable way to secure your belongings. Whether you're carrying groceries, bags, or other items, it offers a practical solution for keeping everything in place during your ride. The elasticity ensures a secure fit, adapting to various loads and shapes. Weight: 0.10 kg Length: 0.6 m.

Available in black
and brown



BUCKLE SET

#1690

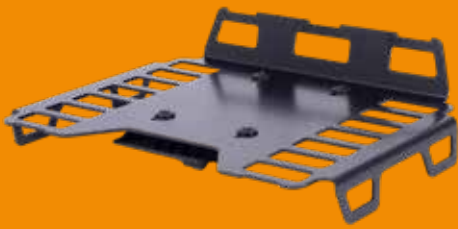
This set, with its stiff fabric and buckle can be securely fastened onto your basket, providing a reliable way to attach and secure your belongings. Whether you're carrying groceries, bags, or other items, it offers a practical solution for keeping everything in place during your ride. Weight: 0.1 kg Length: 0.8 m.



AVS PREMIUM PLASTIC FEET

#1694-41

Stability feet for AtranVelo top bags and premium adaptors. Designed to keep the bag upright and secure on the ground. Easy to install and lightweight, they prevent your bag from tipping over, protecting it from damage and dirt. Weight: 0.58 kg Width: 0.145 m.



TRAYCY
#1761-71

A versatile and sturdy accessory holder designed for both front and rear carriers. This holder offers simplicity and compactness, perfect for carrying bags and boxes or other essentials during your ride. Two pcs of FLAT BUNGY CORD is included. Weight: 1.28 kg. Width: 0.35 m Length: 0.38 m.



ADD PC
#1810-PC-40

The perfect solution for keeping your laptop safe and secure in your bag. Designed to fit seamlessly into your bag, this lightweight insert provides padding and protection for your laptop while you're on the go. Weight: 0.08 kg Dimensions: 34cm x 26cm/ 16 inches.



ADD 27
#1810-57-40

ADD 27 is a perfect companion to the DUO basket. A magnetic flap keeps the bag securely in place, and the robust handles mean you can easily carry it wherever you go. Weight: 0.36kg Volume: 27 L.



ADD 25
#1810-55-40

ADD 25 fits the EPIC SIDE basket. It's a durable 25L water-resistant bag tailored for the epic side basket. It is Equipped with magnetic flaps, which securely fastens it to your basket for worry-free travel. Its water-resistant design ensures your belongings stay dry, while sturdy handles guarantee easy portability. Weight: 0.31kg Volume: 25 L.

B2B CUSTOMER REVIEWS



Tomasz Krzyzak

Romet

The collaboration with AtranVelo regarding the integration of your bicycle accessories into our products/services has been excellent. The team's responsiveness and the quality of the accessories have met our expectations, making the integration process smooth and efficient. We appreciate the support and look forward to continuing our partnership.



Ulrik Bengtsson

Cycleurope

Carriers and baskets are a big part of the bike design, when it's important to be unique in design and function, Cycleurope create these products together with AtranVelo. That's a good collaboration.

To be able to offer the possibility to be unique when needed and at the same time offer the AVS system we find ways to strengthen our competitiveness in the market.



Sam Lawson

Sportline

The most valuable features to us are the quality and the ease of use. The AVS system is very intuitive, it's straightforward to use for novices and experienced cyclists alike. The diverse range of accessories offers lots of choices and the quality of the products are really top!

Our customers can look at our products as a total package, rather than a starting point.

Around the world...



AtranVelo supplies to more than 30 countries

CONNECT
with us

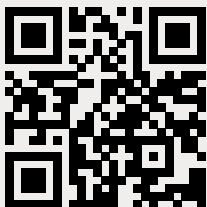
LinkedIn
@AtranVelo



Instagram
@atranvelocyclelab



Facebook
@AtranVelo



Falkenberg, Sweden
info@atranvelo.com
+46 346 199 00

www.atranvelo.com